

SR PHONARES®

MODERN MASTERPIECES

TOOTH MOULD CHART

- SR PHONARES NHC
- SR PHONARESTyp NHC
- SR PHONARESLingual NHC



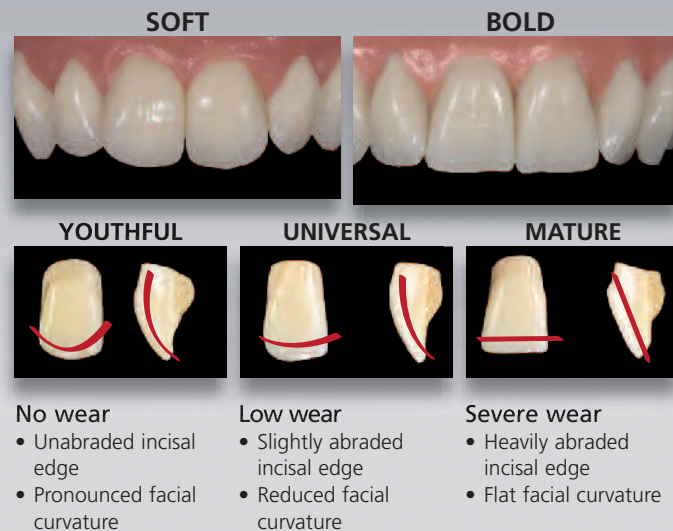
SELECTION CRITERIA

ANTERIOR TEETH

A range of tooth moulds designed to match the age and characteristics of the individual patient

A straightforward selection procedure

The tooth moulds are arranged into easy-to-identify groups according to an innovative new concept. The teeth that most accurately match the individual characteristics of the patient can be easily selected.



In addition to the shade, the shape (form) and size of anterior teeth have to be matched to the individual characteristics of the patient. The SR PHONARES NHC line of teeth offers 18 upper and 4 lower tooth moulds for the anterior region.

If possible, the anterior teeth should be selected directly on the patient according to the patient's anatomical and facial characteristics. The following methods are recommended to facilitate the selection procedure:

CHAIRSIDE

FormSelector

The SR PHONARES FormSelector allows fast, easy and targeted selection of the appropriate anterior tooth mould.



- Step 1** Determine the interalar width of the nose with the help of the FacialMeter. Select an appropriately sized tooth mould from the INTER-ALA table.
- Step 2** After having identified the correct size category, select the desired tooth form, soft or bold, in line with the shape of the patient's face.
- Step 3** Select the appropriate age group of the teeth according to the incisal and facial curvature of the SR PHONARES NHC teeth.

LABSIDE

Model analysis

Determine the following reference points with the help of a model analysis:

a] Position of canines

Identify the first large pair of rugae; the midpoint of the labial surface of the upper canines is aligned at a distance of 9 mm.

b] Intersection point of central incisors

The labial surface of the central incisors is aligned at a distance of 7 mm to the centre of the incisive papilla.

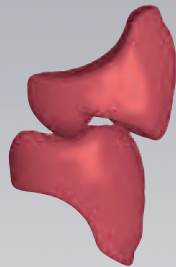
The length of the dental arch measured across these three points can be used as a reference to select a set of anterior teeth with an appropriate width from the tooth mould chart.

The SR PHONARES product family incorporates two posterior tooth lines

SR PHONARESTyp NHC

The SR PHONARESTyp NHC teeth are suitable for a wide range of applications and are therefore the classic denture teeth for partial, complete and hybrid denture prosthetics.

Conventional occlusion



One-to-two setup



SR PHONARESLingual NHC

The SR PHONARESLingual NHC tooth line is based on a lingualized occlusion concept. In addition to universal applications, these teeth are therefore particularly suitable for implant-borne removable restorations as they offer an ideal static alignment.

Lingualized occlusion

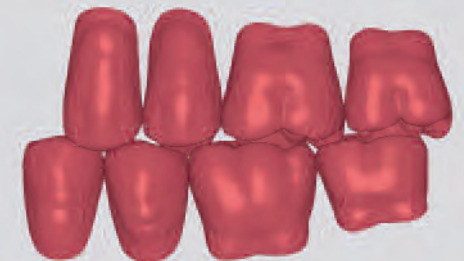


One-to-one setup



OR

One-to-two setup



ANTERIOR TEETH

SR **PHONARES**[®]
NHC

SOFT

YOUTHFUL

UNIVERSAL

MATURE

Small



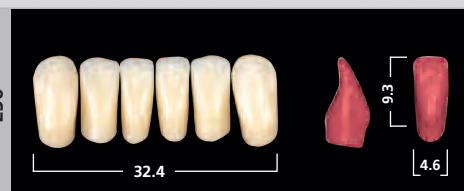
Medium



Large



L50




L51



SR PHONARES[®]
NHC

BOLD

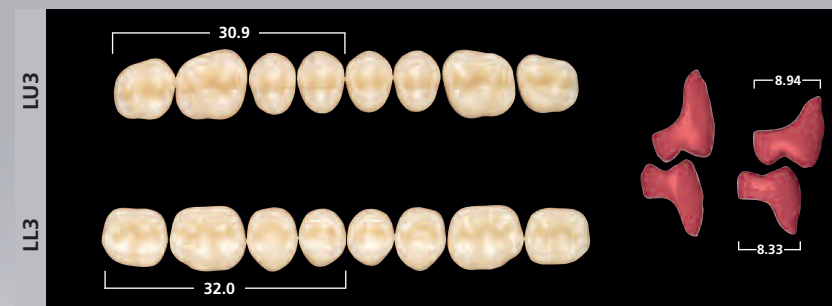
	YOUTHFUL	UNIVERSAL	MATURE
Small	<p>B61</p>  <p>42.2</p> <p>10.7</p> <p>8.2</p>	<p>B71</p>  <p>43.2</p> <p>10.3</p> <p>7.9</p>	<p>B81</p>  <p>42.0</p> <p>9.7</p> <p>7.6</p>
Medium	<p>B62</p>  <p>45.8</p> <p>11.8</p> <p>9.0</p>	<p>B72</p>  <p>45.0</p> <p>10.8</p> <p>8.3</p>	<p>B82</p>  <p>45.6</p> <p>10.7</p> <p>8.3</p>
Large	<p>B63</p>  <p>50.2</p> <p>13.2</p> <p>9.8</p>	<p>B73</p>  <p>49.6</p> <p>11.9</p> <p>9.0</p>	<p>B83</p>  <p>49.0</p> <p>11.1</p> <p>9.2</p>
	<p>L52</p>  <p>37.4</p> <p>10.8</p> <p>5.5</p>	<p>L53</p>  <p>36.6</p> <p>10.2</p> <p>5.3</p>	

POSTERIOR TEETH

SR PHONARES[®] *Typ* NHC



SR PHONARES[®] *Lingual* NHC



		SR PHONARES NHC		SR PHONARES <i>Typ</i> NHC	SR PHONARES <i>Lingual</i> NHC
		upper	lower		
Small	soft	S61	L50	NU3 / NL3	LU3 / LL3
		S71	L51	NU3 / NL3, NU5 / NL5	LU3 / LL3, LU5 / LL5
		S81	L50, L51	NU3 / NL3	LU3 / LL3, LU5 / LL5
	bold	B61	L50, L51	NU3 / NL3	LU3 / LL3
		B71	L50, L51	NU3 / NL3, NU5 / NL5	LU3 / LL3
		B81	L50, L51	NU3 / NL3	LU3 / LL3
Medium	soft	S62	L51	NU3 / NL3, NU5 / NL5	LU5 / LL5
		S72	L51, L53	NU5 / NL5	LU5 / LL5, LU6 / LL6
		S82	L51, L53	NU5 / NL5	LU5 / LL5, LU6 / LL6
	bold	B62	L51, L53	NU3 / NL3, NU5 / NL5	LU5 / LL5, LU6 / LL6
		B72	L51	NU3 / NL3, NU5 / NL5	LU5 / LL5, LU6 / LL6
		B82	L51, L53	NU3 / NL3, NU5 / NL5	LU3 / LL3, LU5 / LL5
Large	soft	S63	L52, L53	NU5 / NL5	LU6 / LL6
		S73	L52	NU5 / NL5, NU6 / NL6	LU6 / LL6
		S83	L52, L53	NU5 / NL5, NU6 / NL6	LU6 / LL6
	bold	B63	L52, L53	NU6 / NL6	LU6 / LL6
		B73	L52, L53	NU6 / NL6	LU6 / LL6
		B83	L52	NU5 / NL5, NU6 / NL6	LU6 / LL6

This combination table is recommended as a guideline. In case of particular anatomical conditions, deviations are possible.

Shade selection

with the SR PHONARES NHC shade guide

Shade selection should be performed on the patient under defined light conditions (5500K colour temperature) or in daylight. An accompanying shade guide enables a consistent shade selection procedure according to the A-D shade system. The tooth samples of the shade guide are based on the same layering pattern and materials as the original SR PHONARES teeth. Shade deviations are therefore minimized.

Shade selection may also be performed with the help of a Vitapan Classical Universal shade guide.



Ivoclar Vivadent ICDE



Being consistently on the latest standard of knowledge is a sign of your competence. Ivoclar Vivadent supports you in achieving this objective by providing you with both knowledge about the latest products and know-how on practice-oriented application and working techniques.

The Ivoclar Vivadent ICDE continuously offers basic and advanced training courses tailored to your needs.

Ask for our Course Programme!



This is a product from our field of competence in "Implant Esthetics". Products from this range are coordinated with each other.

CE 0123

ISO 22112:2005

Descriptions and data constitute no warranty of attributes and are not binding.
Printed in Switzerland
© Ivoclar Vivadent AG, Schaan/Liechtenstein
628233/0909/e/RDV

Ivoclar Vivadent AG
Bendererstr. 2
FL-9494 Schaan
Principality of Liechtenstein
Tel. +423 / 235 35 35
Fax +423 / 235 33 60
www.ivoclarvivadent.com

ivoclar vivadent
passion vision innovation